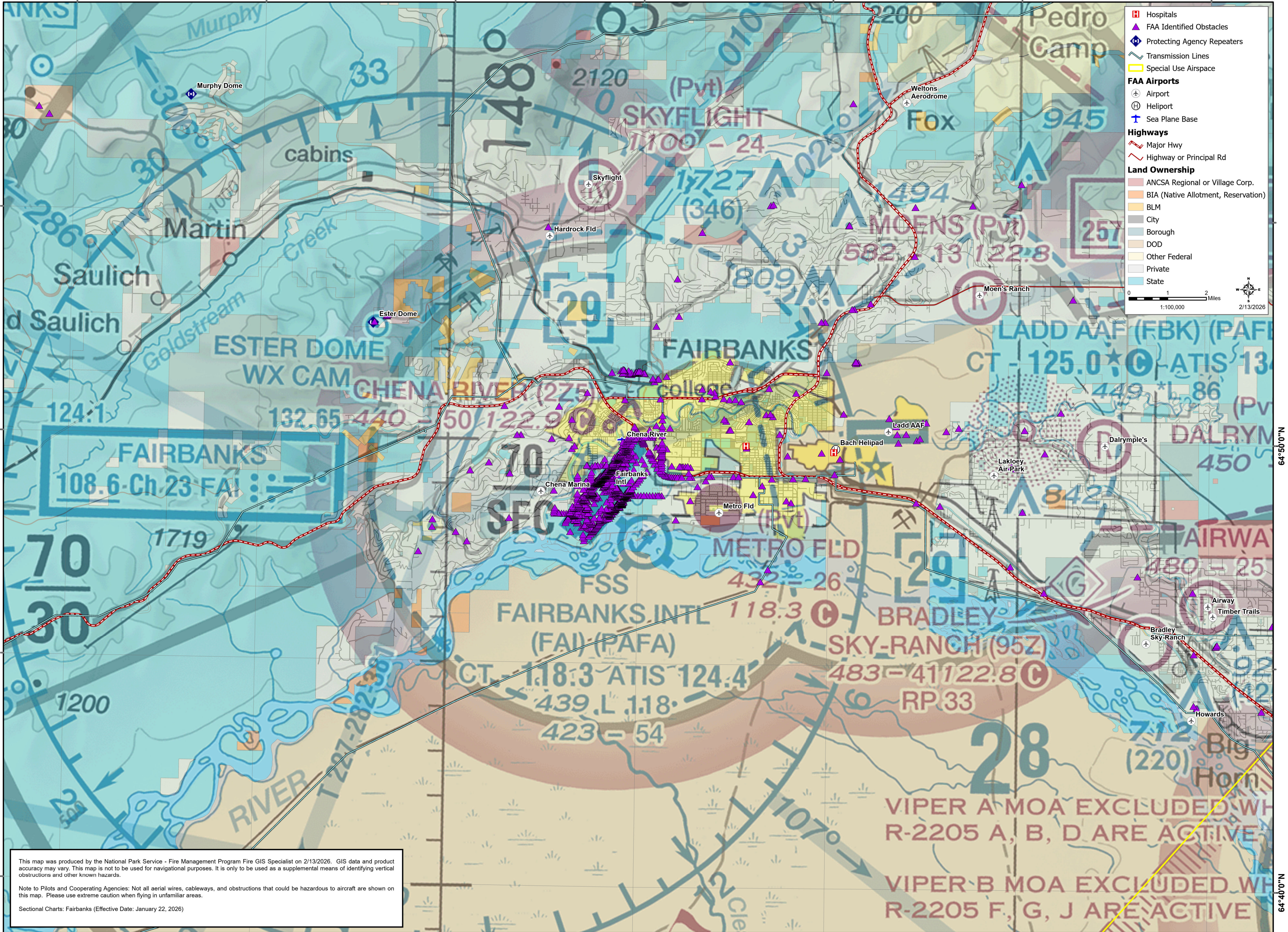




148°0'0"W

147°30'0"W



This map was produced by the National Park Service - Fire Management Program Fire GIS Specialist on 2/13/2026. GIS data and product accuracy may vary. This map is not to be used for navigational purposes. It is only to be used as a supplemental means of identifying vertical obstructions and other known hazards.

Note to Pilots and Cooperating Agencies: Not all aerial wires, cableways, and obstructions that could be hazardous to aircraft are shown on this map. Please use extreme caution when flying in unfamiliar areas.

Sectional Charts: Fairbanks (Effective Date: January 22, 2026)

148°0'0"W

147°30'0"W

64°50'0"N

64°50'0"N

64°40'0"N

64°40'0"N